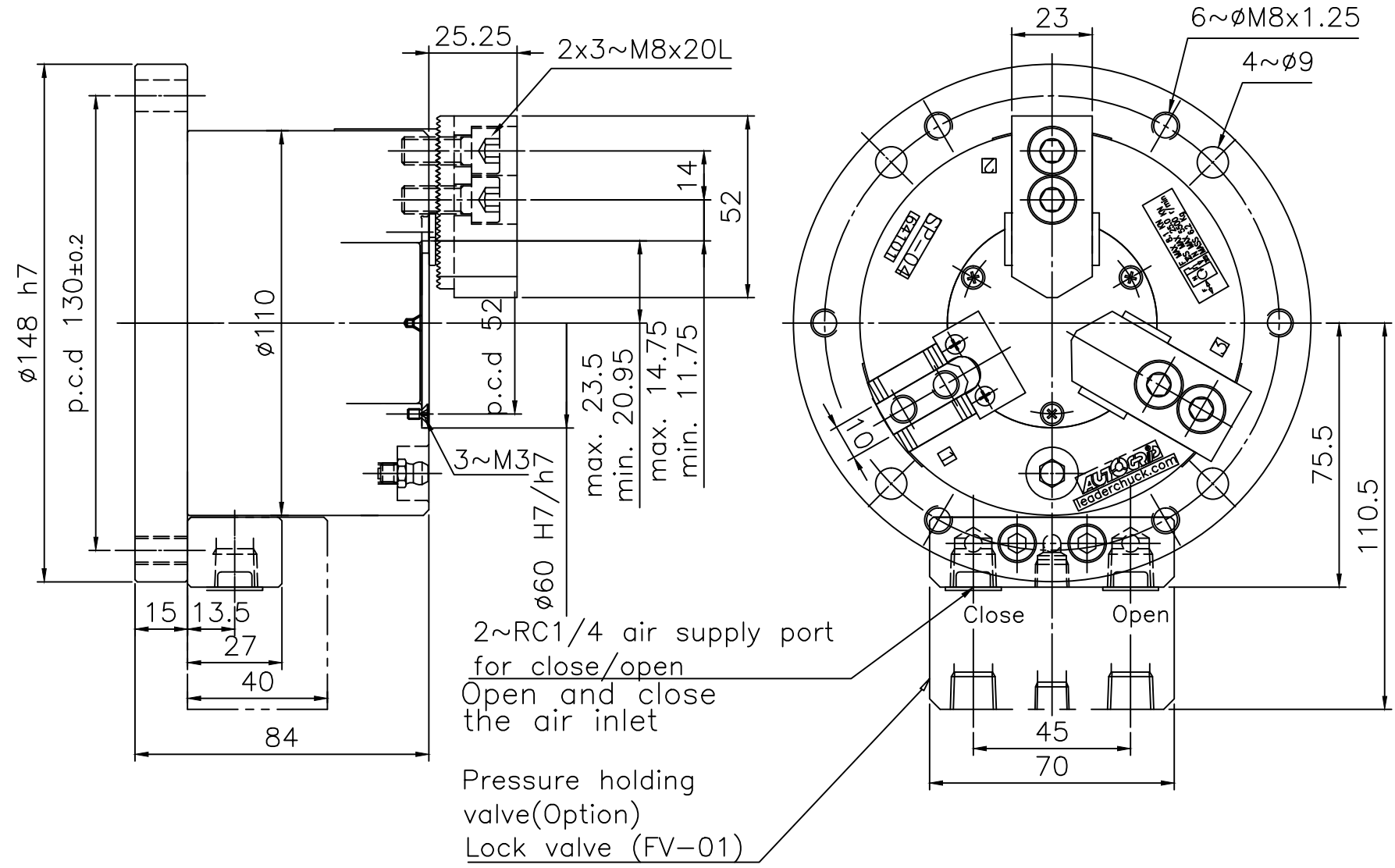


6		5		4		3		2		1	
Spec.	mm	Chuck Dia. mm		Max gripping force kN		Max pressure kg/cm ²		kg/cm ²	(use pressure 6.0kgf/cm ²)	kg	Confirmed
Model	Jaw Stroke (Dia.)	Max.	min.	Pneumatic at 6.0kgf/cm ²	Hydraulic at 13.0kgf/cm ²	Air pressure Pneumatic	Oil pressure Hydraulic	Min. pressure	Air consumption (at 6.0 kgf/cm ²)	Weight	
SE-304	5.1	110	10	7.5	22	6	13	2	0.5	7	



LEADER CHUCK INTERNATIONAL
+44 (0) 1827 700000
+353 (0)1 254 2555
INFORMATION@LEADERCHUCK.COM
LEADERCHUCK.COM

TITLE:
3 Jaw Partial Open Centre Self
Contained Hydraulic or Pneumatic
Power Chuck

DRAWING NO.:
A4\AG-SP-304



6		5		4		3		2		1	
---	--	---	--	---	--	---	--	---	--	---	--