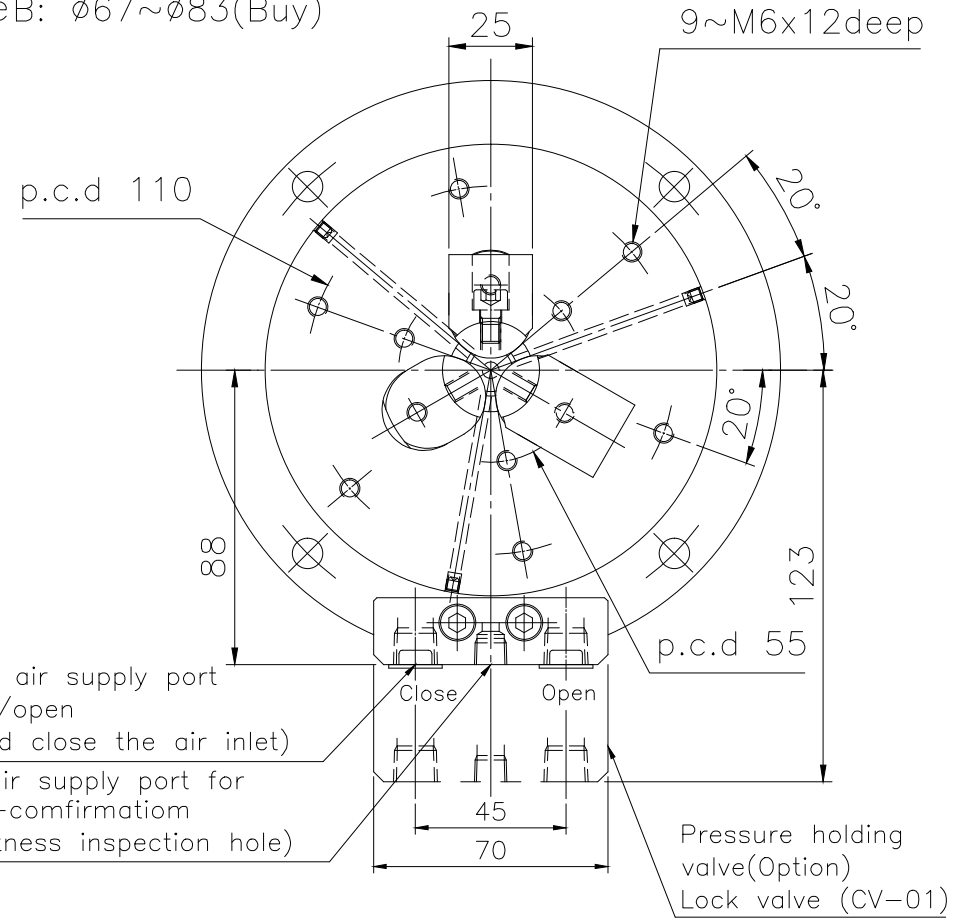
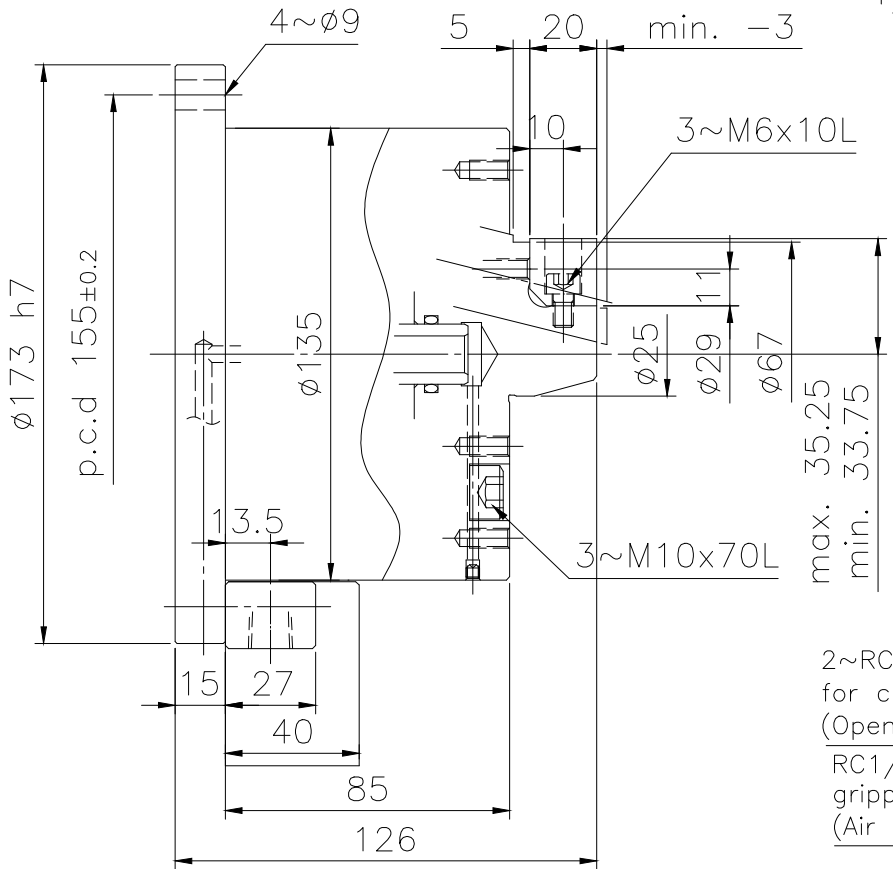


6		5		4		3		2		1	
Spec.	mm	Chuck Dia. mm		Max gripping force kN		Max pressure kg/cm ²		kg/cm ²	(use pressure 6.0kgf/cm ²) lit	kg	Confirmed
Model	Jaw Stroke (Dia.)	Max.	min.	Pneumatic at 6.0kgf/cm ²	Hydraulic at 13.0kgf/cm ²	Air Pressure Pneumatic	Oil Pressure Hydraulic	Min. pressure	Air consumption (at 6.0 kgf/cm ²)	Weight	
SE-305	3	83	29	14.3	41	7	13	2	0.46	14.6	

Clamping range:
 Main jaw clamping: $\phi 29 \sim \phi 50$
 Raw jaw clamping: $\phi 50 \sim \phi 83$
 Type A: $\phi 50 \sim \phi 68$
 Type B: $\phi 67 \sim \phi 83$ (Buy)



LEADER CHUCK INTERNATIONAL
 +44 (0) 1827 700000
 +353 (0) 1 254 2555
 INFORMATION@LEADERCHUCK.COM
 LEADERCHUCK.COM

TITLE:
 Internal Clamping Expanding Pull Back 3 Jaw
 Self Contained Hydraulic or Pneumatic Power
 Chuck with Simultaneous Radial & Axial Clamping

DRAWING NO.:
 A4 \ AG-SE-305



6		5		4		3		2		1
---	--	---	--	---	--	---	--	---	--	---