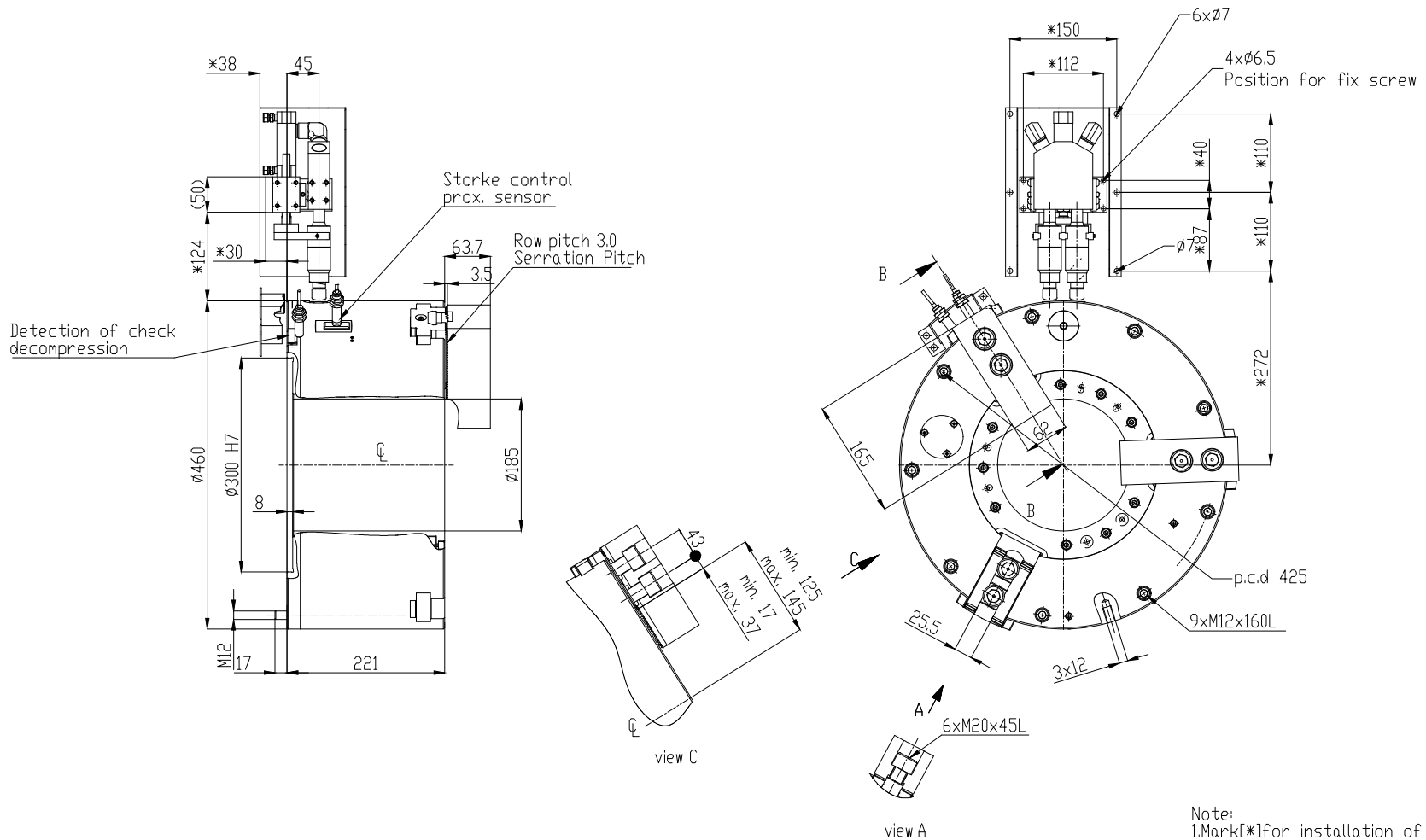


Spec.	mm	Jaw Stroke (Dia.) mm		Chucking Dia. mm		kgf	lit	r.p.m.	l	kg	Confirmed
		Model	Thru-hole Dia.	Rapid	Gripping	Max.	min.	Gripping force (at 6.0 kgf/cm <sup>2</sup> )	Air consumption (at 6.0 kgf/cm <sup>2</sup> )	Max speed	
APS-185	185	26	14	460	127	110 (11216)	22	1300	6.45	198	



LEADER CHUCK INTERNATIONAL  
+44 (0) 1827 700000  
+353 (0)1 254 2555  
INFORMATION@LEADERCHUCK.COM  
LEADERCHUCK.COM

TITLE:  
Large thru-hole air chuck

DRAWING NO.:  
A3\AG-APS-185

