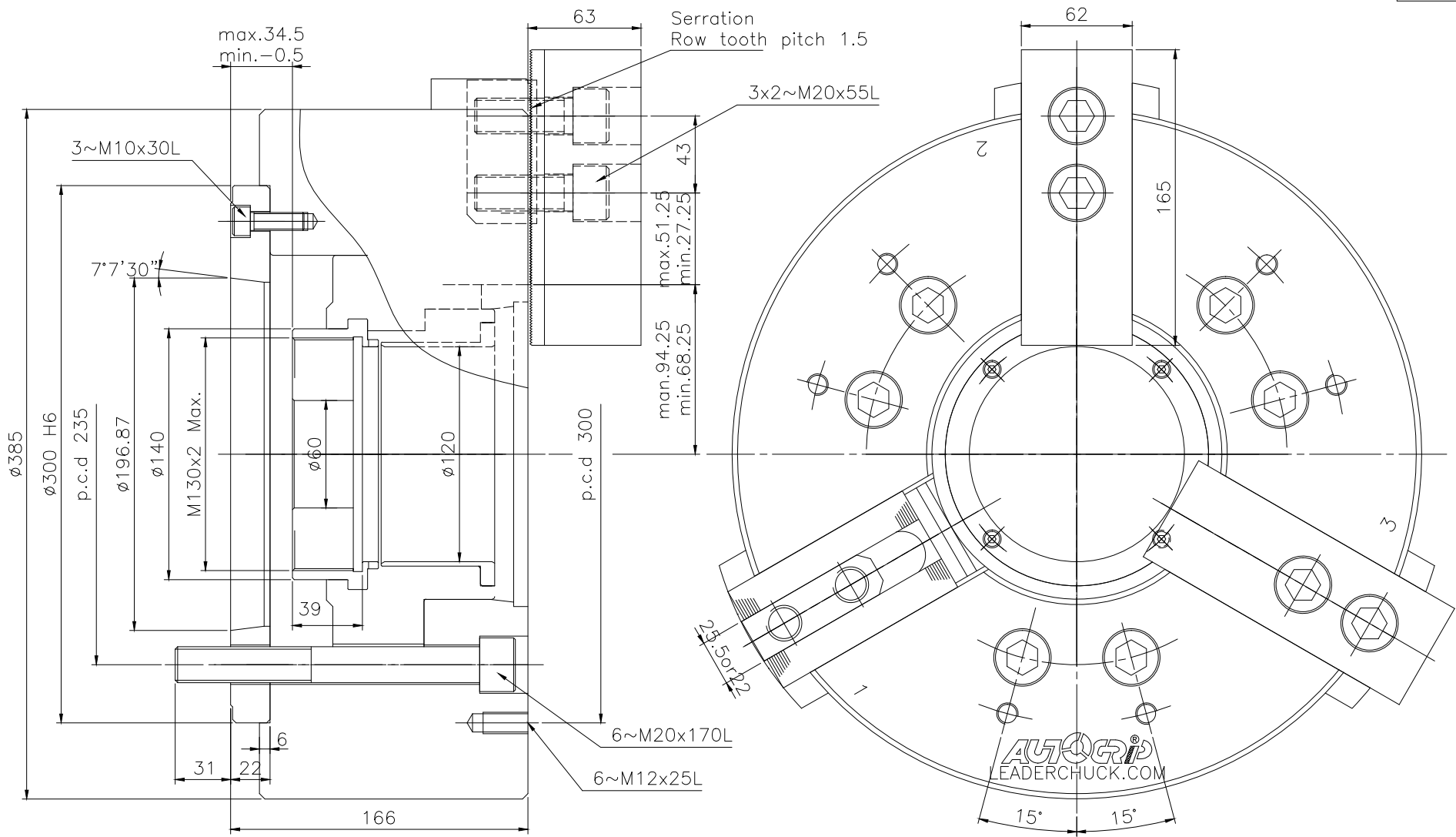


8	7		6		5	4	3	2	1	
	Spec.	mm	mm	Chucking Dia. mm		kgf	kgf	r.p.m.	l	kg
Model	Plunger Stroke	Jaw Stroke (Dia.)	Max.	min.	Max D.B. pull	Max clamping force	Max speed	kg m <sup>2</sup>	Weight	Confirmed
3L-15A11	35	52	385	26	8600	6930	1600	2.58	143.0	



LEADER CHUCK INTERNATIONAL  
+44 (0) 1827 700000  
+353 (0)1 254 2555  
INFORMATION@LEADERCHUCK.COM  
LEADERCHUCK.COM

TITLE: Extra long jaw stroke thru-hole  
3 jaw power chuck

DRAWING NO.: A3\AG-3L-15A11

